

# High Temperature Dry Block Furnace



- High Accuracy
- High Temperature
- Highly Stable Temperature Calibrator for Industrial Field Uses

## High Temperature Dry Block Furnace

---

### Wide Temperature Range

CALsys 1200L offer a wide temperature range from 300 °C to 1200 °C

### Simple to use

The CALsys 1200L block is ideal for Industrial/ Laboratory field use. it is simple enough to testing and calibration uses.

### Accuracy and performance

The CALsys 1200L is an easy to use also provides excellent calibration accuracy with stability  $\pm 0.5^{\circ}\text{C}$  at 1200°C.

### Accredited calibration

Each CALsys 1200L is delivered with an accredited calibration certificate.

### Computer Interface

The communication port(RS-232) enables communication with selected CALsys 1200L calibrators for automation calibration and documentation thus it made documentation easy.

## Calsys 1200L

Highly accurate temperature Calibrator for Industrial / Laboratory field use

---



CALsys 1200L offers easy to use temperature calibrator with high temperature range from 300 to 1200°C. It is a highly stable standard furnace for calibrating thermocouples / RTD. This calibrator can be used on site for high temperature calibration and also find application in glass, electric power, automotive and material process industry. The comparison volume is a metallic block of special material, which has a diameter of 37mm and 160mm depth. The temperature of the calibrator is set and controlled by a self tuned PID controller with automatic super fine adjustment. Our newly designed CALsys 1200L model offers better esthetic design and performance wise upgraded to next level.

With the Tempsens make Temperature Calibrator, you have chosen an extremely effective instrument which we hope will live up to all your expectations. This is a fast, timesaving, and reliable true industrial temperature calibrator designed for on-site use.

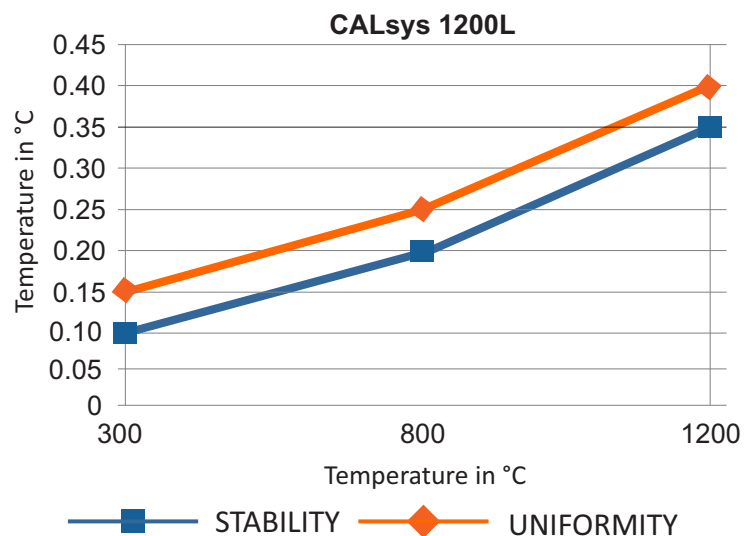
During the past several years, we have acquired extensive knowledge of industrial temperature calibration. This expertise is reflected in our products which are all designed for daily use in an industrial environment.

---

## SPECIFICATIONS

Temperature range	300 °C to 1200 °C
Accuracy	±2 °C
Stability	±0.1°C at 300°C
	±0.2°C at 800°C
	±0.35°C at 1200°C
Radial uniformity	±0.15°C at 300°C
	±0.25°C at 800°C
	±0.4°C at 1200°C
Controlling sensors	R type duplex
Stabilization time	15 to 20 mins
Immersion depth	160mm
Insert OD dimensions	37 mm
Method of Control	Self tuned PID controller
Heating time	1.5 Hrs
Resolution	1 °C
Display	LCD, °C or °F user-selectable
Size (H x W x D)	590(H) x 450(W) x 530(D) mm
Weight	50Kg
Power requirements	230 VAC, 50 Hz
Computer interface	RS - 232
Calibration	Accredited calibration certificate provided
Environmental operating conditions	0 °C to 40 °C, 0 % to 90 % RH (non-condensing)
Specifications valid in environmental conditions	13 °C ... 33 °C

## STABILITY / UNIFORMITY

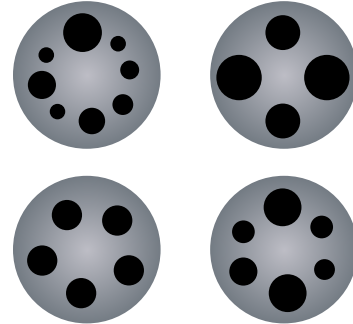


## Insert construction

### Inserts for CALsys 1200L models

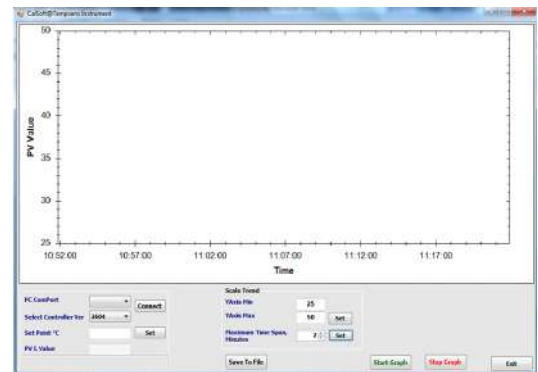
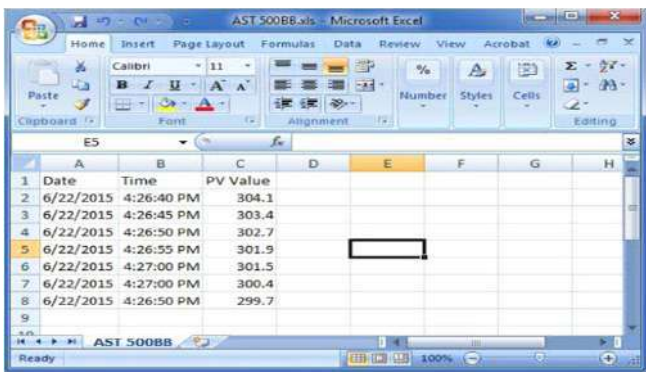
Inserts for CALsys 1200L are made of metallic block of special material. All specifications on hole size based on outer diameter of the sensor under test. We also offer customized hole size based on Customer requirements

Inserts	Description
Ci1	Multihole, 2 x 6.5 mm, 2x8.5 mm
Ci2	Special (Customized)



Customized Equalizing Block....Part No. EQ1

### SOFTWARE



- CalSoft including for setting bath temperature and monitoring the PV. Graphical representations of PV/TIME with 2 hours data logging.

### MASTER SENSOR

- Reference Standard Thermocouple ('N' Type T/C).....  
Part No. TTCN-300



- NABL accredited calibration certificate - 3 point
- Operational Manual

## Dry Block Calibrators

---

### Wide Temperature Range

CALsys 1200 3Z offer a wide temperature range from 300 °C to 1200 °C

### Lightweight, portable

The CALsys 1200 3Z block is ideal for Industrial/ Laboratory field use. It only weighs about 50 kg, and it is small enough to carry around.

### Accuracy and performance

The CALsys 1200 3Z is an easily portable unit that also provides excellent calibration accuracy with stability  $\pm 0.04^\circ\text{C}$  at 650 °C.

### Accredited calibration

Each CALsys 1200 3Z is delivered with an accredited calibration certificate.

### Computer Interface

The communication port (RS-232/ USB) enables communication with selected CALsys 1200 3Z calibrators for automation calibration and documentation thus it made documentation easy.

## CALsys 1200 3Z

High Temperature Calibrator Dry Block Furnace for Industrial/ Laboratory Field Use

---



---

CALsys 1200 3Z calibration source is a highly stable standard furnace for calibrating thermocouples in the laboratory. The temperature of each zone of the furnace is set and controlled by a self-tuned PID controller (master + Slave) with automatic super-fine adjustment. The standard insert is a metallic block of special material, which is 37mm in diameter with 240 mm long and can hold up to four thermocouples. It has been designed for high-temperature range calibration and finds application in the glass, electrical power, automotive, material processing industries & laboratories.

With the Tempsens make Compact Temperature Calibrator, you have chosen an extremely effective instrument which we hope will live up to all your expectations. This is a fast, time-saving, and reliable true industrial temperature calibrator designed for on-site use.

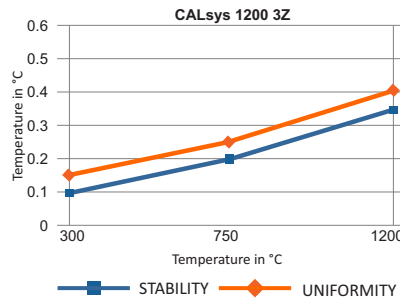
During the past several years, we have acquired extensive knowledge of industrial temperature calibration. This expertise is reflected in our products which are all designed for daily use in an industrial environment.

---

## SPECIFICATIONS

Temperature range	300 to 1200°C
Temperature Resolution	1.0°C
Stability	±0.1°C at 300°C
	±0.2°C at 750° C
	±0.35°C at 1200°C
Radial Uniformity	±0.15°C at 300°C
	±0.25°C at 750° C
	±0.40°C at 1200°C
Axial Uniformity	1.0°C up to 80mm at 1200°C
Time to reach max. temperature	1.5 hrs
Controlling Sensor	Precision PT/RH-PT T/C
No. of Zone	Three
Method of Control	Digital self tuned PID Controller
Insert Construction	Dia 37 x 240 mm long (2X6 mm & 2X8 mm holes) of 160mm insertion depth
Computer Interface	RS - 232
Operating Temperature	20 to 45°C
Power Requirement	230 VAC, 2.0 KW
Dimensions	500(H) x 400(W) x 490(D) mm
Weight	50Kg (without packing)

## STABILITY / UNIFORMITY



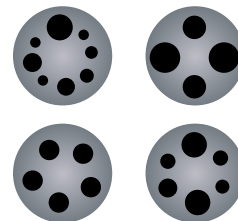
## ACCESSORIES

### STANDARD ACCESSORIES

- Reference Standard Thermocouple ('N' Type T/C).....Part No. TTCN-300
- NABL accredited calibration certificate - 3 point
- Software - Cal Soft including for setting bath temperature and monitoring the PV. Graphical representations of PV/TIME with 2 hours data logging.
- Operational Manual

### OPTIONAL ACCESSORIES

- Customized Equalizing Block....Part No. EQ1



Customized Equalizing Block....Part No. EQ1

## High Temperature Dry Block Furnace

---

### Wide Temperature Range

CALsys 1500L offer a wide temperature range from 500 °C to 1500 °C

### Simple to use

The CALsys 1500L block is ideal for Industrial/ Laboratory field use. It is simple enough to testing and calibration uses.

### Accuracy and performance

The Calsys 1500L is an easy to use that also provides excellent calibration accuracy with stability  $\pm 1.0^{\circ}\text{C}$  at 1500°C.

### Accredited calibration

Each Calsys 1500L is delivered with an accredited calibration certificate.

### Computer Interface

The communication port (RS-232) enables communication with selected Calsys 1500L calibrators for automation calibration and documentation thus it made documentation easy.

## Calsys 1500L

Highly accurate temperature Calibrator for Industrial / Laboratory field use

---



---

Calsys 1500L offers easy to use temperature calibrator with high temperature range from 500 to 1500°C. It is a highly stable standard furnace for calibrating thermocouples / RTD. This calibrator can be used on site for high temperature calibration and also find application in glass, electric power, automotive and material process industry. The comparison volume is a metallic block of special material, which has a diameter of 37mm and 245mm long. The temperature of the calibrator is set and controlled by a self tuned PID controller with automatic super fine adjustment. Our newly designed CALsys 1500L model offers better esthetic design and performance wise upgraded to next level.

With the Tempsens make Temperature Calibrator, you have chosen an extremely effective instrument which we hope will live up to all your expectations. This is a fast, timesaving, and reliable true industrial temperature calibrator designed for on-site use.

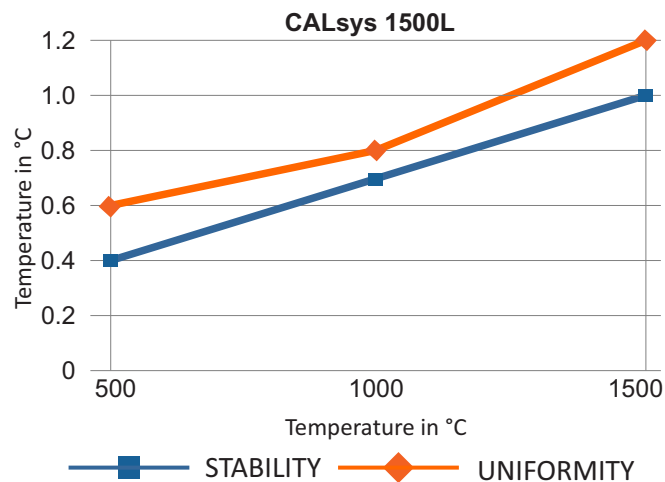
During the past several years, we have acquired extensive knowledge of industrial temperature calibration. This expertise is reflected in our products which are all designed for daily use in an industrial environment.

---

## SPECIFICATIONS

Temperature range	500 °C to 1500 °C
Accuracy	±3 °C
Stability	±0.4°C at 500°C
	±0.6°C at 1000°C
	±1°C at 1500°C
Uniformity	±0.6°C at 500°C
	±0.8°C at 1000°C
	±1.2°C at 1500°C
Controlling sensors	R type duplex
Stabilization time	15 to 20 mins
Immersion depth	140 mm
Insert dimensions	37 mm
Method of Control	Self tuned PID controller
Heating time	2 Hrs
Resolution	1 °C
Display	LCD, °C or °F user-selectable
Size (H x W x D)	590(H) x 450(W) x 530(D) mm
Weight	55Kg
Power requirements	230 VAC, 3.0 KW(50 Hz)
Computer interface	RS - 232
Calibration	Accredited calibration certificate provided
Environmental operating conditions	0 °C to 40 °C, 0 % to 90 % RH (non-condensing)
Specifications valid in environmental conditions	13 °C ... 33 °C

## STABILITY / UNIFORMITY



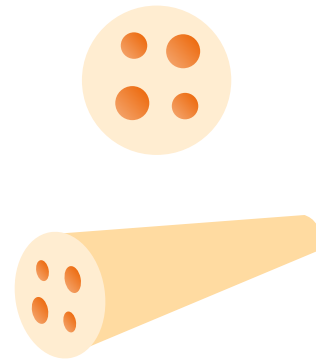


## Insert construction

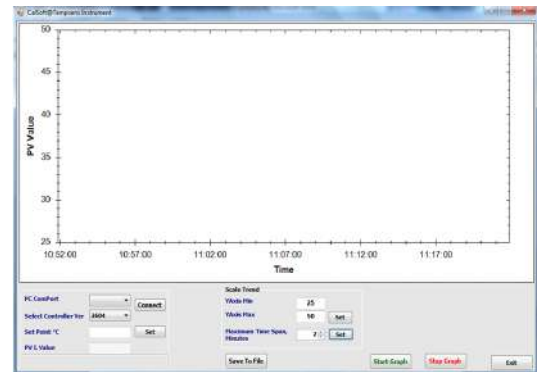
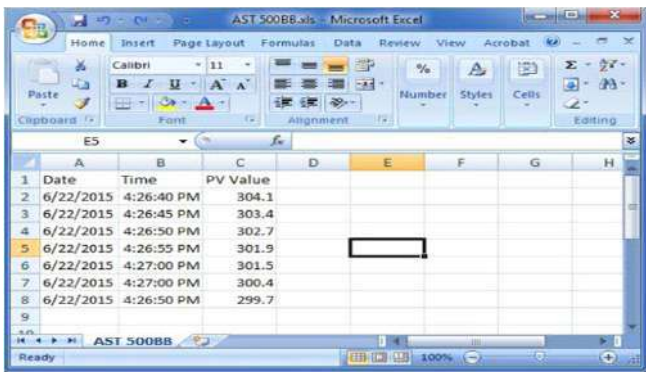
### Inserts for CALsys 1500L models

Inserts for CALsys 1500L are made of ceramic block. All specifications on hole size based on outer diameter of the sensor under test. We also offer customized hole size based on Customer requirements

Inserts	Description
Ci1	Multihole, 2 x 6.5 mm, 2x8.5 mm
Ci2	Special (Customized)



### SOFTWARE



- CalSoft including for setting bath temperature and monitoring the PV. Graphical representations of PV/TIME with 2 hours data logging.

### MASTER SENSOR (OPTIONAL)

- Reference Standard Thermocouple (PT-RH-RH/PT R Type T/C)..... Part No. TTCR-300



- NABL accredited calibration certificate - 3 point
- Operational Manual

## High Temperature Dry Block Furnace

---

### Wide Temperature Range

CALsys 1700L offer a wide temperature range from 500 °C to 1700 °C

### Simple to use

The CALsys 1700L block is ideal for Industrial/ Laboratory field use and it is simple enough to testing and calibration uses.

### Accuracy and performance

The CALsys 1700L is an easy to use that also provides excellent calibration accuracy with stability  $\pm 1.5^{\circ}\text{C}$  at 1700°C.

### Accredited calibration

Each CALsys 1700L is delivered with an accredited calibration certificate.

### Computer Interface

The communication port (RS-232) enables communication with selected CALsys 1700L calibrators for automation calibration and documentation thus it made documentation easy.

## Calsys 1700L

Highly accurate temperature Calibrator for Industrial / Laboratory field use

---



CALsys 1700L offers easy to use temperature calibrator with high temperature range from 500 to 1700°C. It is a highly stable standard furnace for calibrating thermocouples / RTD. This calibrator can be used on site for high temperature calibration and also find application in glass, electric power, automotive and material process industry. The comparison volume is a metallic block of special material, which has a diameter of 37mm and 240mm long. The temperature of the calibrator is set and controlled by a self tuned PID controller with automatic super fine adjustment. Our newly designed CALsys 1700L model offers better esthetic design and performance wise upgraded to next level.

During the past several years, we have acquired extensive knowledge of industrial temperature calibration. This expertise is reflected in our products which are all designed for daily use in an industrial environment.

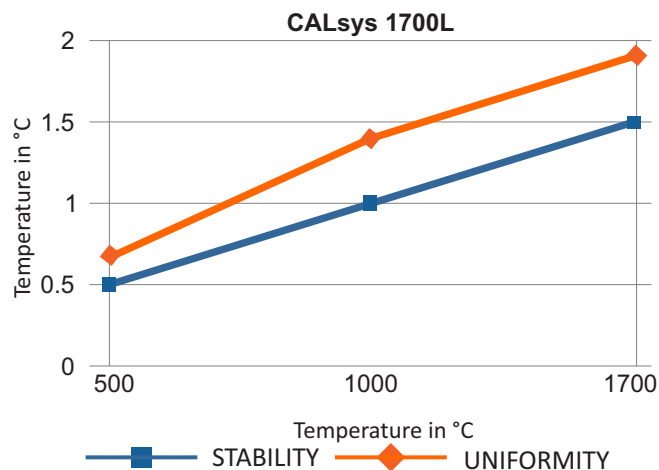
Tempsens make Temperature Calibrator is an extremely effective instrument which we hope will live up to all your expectations. This is a fast, timesaving, and reliable true industrial temperature calibrator designed for on-site use.

---

## SPECIFICATIONS

Temperature range	500 °C to 1700 °C
Accuracy	±4 °C
Stability	±0.5°C at 500°C
	±1.0°C at 1000°C
	±1.5°C at 1700°C
Radial uniformity	±0.6°C at 500°C
	±1.4°C at 1000°C
	±1.9°C at 1700°C
Stabilization time	15 to 20mins
Controlling sensor	B type duplex
Radial uniformity	±0.6 °C at 500°C
	±1.4°C at 1000°C
	±1.9°C at 1700°C
Method of Control	Self tuned PID controller
Immersion depth	225mm
Insert OD dimensions	37 mm
Heating time	3 Hrs
Resolution	1 °C
Display	LCD, °C or °F user-selectable
Size (H x W x D)	640(H) x 500(W) x 550(D) mm
Weight	80Kg
Power requirements	230 VAC 50/60Hz
Computer interface	RS - 232
RS - 232	Accredited calibration certificate provided
Environmental operating conditions	0 °C to 40 °C, 0 % to 90 % RH (non-condensing)
Specifications valid in environmental conditions	13 °C ... 33 °C

## STABILITY / UNIFORMITY

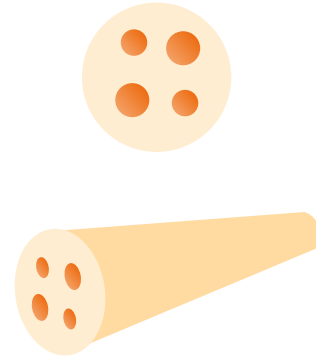


## Insert construction

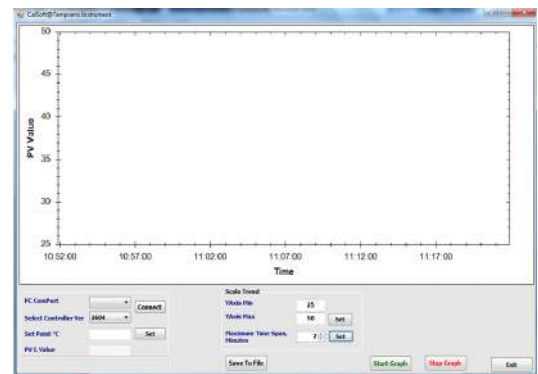
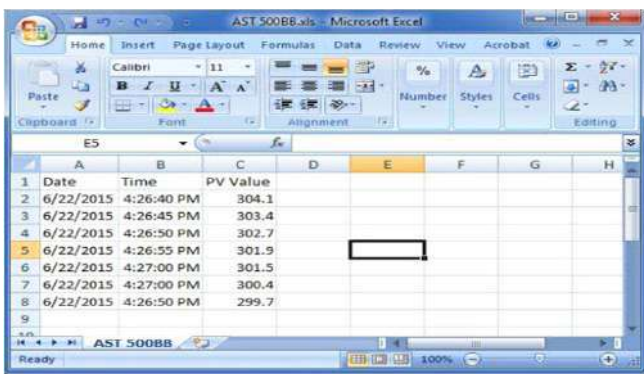
### Inserts for CALsys 1700L models

Inserts for CALsys 1700L are made of special material. All specifications on hole size based on outer diameter of the sensor under test. We also offer customized hole size based on Customer requirements

Inserts	Description
Ci1	Multihole, 2 x 6.5 mm, 2x8.5 mm
Ci2	Special (Customized)



### SOFTWARE



- CalSoft including for setting bath temperature and monitoring the PV. Graphical representations of PV/TIME with 2 hours data logging.

### MASTER SENSOR (OPTIONAL)

- Reference Standard Thermocouple (PT-RT/PT “B type T/C”)..... Part No. TTCB-300



- NABL accredited calibration certificate - 3 point
- Operational Manual