

Highly Accurate Digital Pyrometer with Extended Sensor Head, Laser light, Inbuilt LCD & Keypad for Parameterization for Temperature measurement of Metals

CE 50°C to 600°C

E150 PL is highly economic digital IR pyrometer with extended sensor head and separate electronic box for non-contact temperature measurement of metals, ceramics and graphite etc in temperature ranges between 50°C and 600°C.

E150 PL IR Pyrometer is a two piece measurement systems containing one extended sensor head and one electronic box. The electronic box comes with Inbuilt 4 digit LCD display which offers many signal processing features. The Keypad on the electronic box helps in setting parameters like Emissivity, Analog Sub range, Set point, Hysteresis (Hyst), Analog Output, Unit of temp(°C or F), Response Time, Peak Picker and Sensor address etc. The sensor head is unaffected by electromagnetic interferences.

E150 PL Infrared Pyrometer is provided with USB 2.0 output & PC Software for communication. The pyrometer can be powered through USB port, in this case no external power supply is required. 24V DC is required for operation of Analog output 4...20mA, 0...20mA, 0... 10V, Laser, RS-232/RS-485 and Relay output.

Technical specifications

Model	E150 PL
Temperature Range(Analog sub-range adjustable)	50°C....500°C 100°C....600°C
Spectral Range	2.3....2.6 μm
Photodetector Type	Extended InGaAs
Distance to Spot Size Ratio	20 : 1, 40 : 1
Emissivity (ε)	0.1....1.0 adjustable
Response Time	2 msec adjustable upto 10 sec
Accuracy	±0.5% of the measured value ±2°C
Repeatability	0.1% of reading in °C ±1°C
Sighting Option	Laser Pilot Light(PL)
Analog Output	0-20mA, 4-20mA, 0-10V(User Selectable)
Digital Output	USB 2.0 output RS - 232 / RS - 485 interface card (Optional) *at a time only one digital output possible
Operating Temp. Range	Electronic Box and Sensor Head upto 70°C
Storage Temp. Range	-20°C....70°C
Relay Output	Relay output with hysteresis 60V DC / 42V AC RMS, 0.4A
Adjustable Parameters and Features via Software	Emissivity, Response Time, Clear Time(Peak Picker), Analog Output, Analog Scale(sub range), Unit of Temperature(°C/°F), Communication mode(Comm. mode), Record Feature etc.
Adjustable Parameters and Features via Keypad	Emissivity, Set Point, Hysteresis (Hyst), Analog Sub Range, Analog Output, Unit of temperature, Sensor address, Response Time, Clear Time (Peak Picker) etc.
Power Supply	12V to 28V DC with reverse polarity protection
Power Consumption	Max 2.5 watt
Laser Power	<1 m watt
Protection Class	IP65
Housing	Sensor Head : Stainless Steel Electronic Box : Zinc
Isolation	Power supply, * Digital output and Analog output are galvanically isolated against each other *Not applicable for USB 2.0 digital output
Operating Humidity	10-95%, Non-Condensing Conditions
Weight & Dimensions	600g 112.5mmx82.5mmx33mm (L x W x H)

*Accuracy and repeatability applicable at ambient temperature 23°C ±5°C



Features

- Wide temperature ranges from 50°C to 600°C.
- Spectral range from 2.3 μm....2.6 μm
- Inbuilt LCD Display and Keypad for parameterisation
- Fast response time within milliseconds
- Laser Targeting light for precision targeting
- Analog output options available like 0...20mA, 4...20mA and 0...10V
- USB2.0 Digital output and RS-232/RS-485 Serial interface
- Relay output
- User friendly PC software for communication

Standard Scope of Supply

- Pyrometer with LCD Display
- Keypad for parameterizing
- Extended Sensor head with 3 mtr cable
- Laser Targeting Light
- Analog output 4...20mA, 0...20mA, 0... 10V
- USB 2.0 Digital output, USB cable
- Relay Output
- Calibration certificate, Software & Operation manual

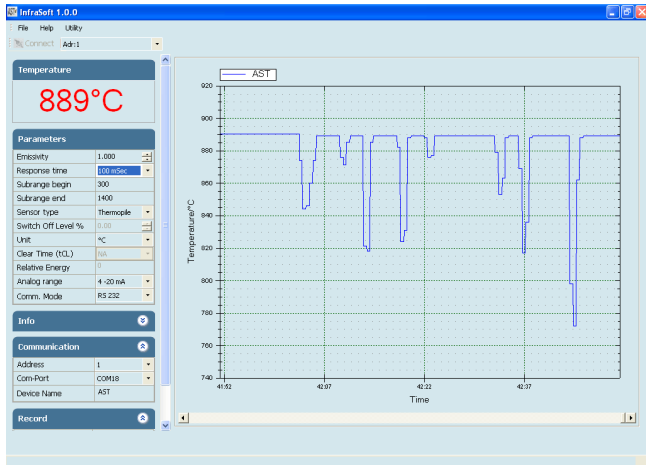
Optional

- Mechanical & Electrical Accessories
- RS-232 / RS-485 Interface card
- Extra Sensor Head Extension Cable Lengths

Applications

- Induction heating
- Casting
- Annealing
- Welding
- Forging
- Sintering
- Melting
- Rolling

Software "Infrasoft"



Spot Sizes

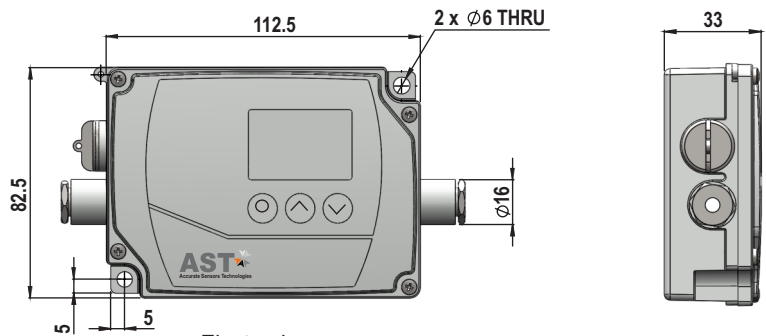
Manufactured Working Distances WD (mm)	Spot Sizes (mm)	
	E150 50°C - 500°C (20:1)	E150 100°C - 600°C (40:1)
200	10	5
300	15	7.5
600	30	15
Aperture(A)	5	5

Pyrometer Drawing



Sensing Head

*all dimensions in mm



Electronics

Accessories

Water Cooling Jacket Incl. Air Purge Unit-Sensor Head (Reference No: 8000-01)



Air Purge Unit-Sensor Head (Reference No: 8200-01)



Adjustable Mounting for Sensor Head (Reference no: 8200-03)



Converter RS-232 ↔ RS-485 (Reference no: 9000-03)



Power supply Input 110/230V AC
Output 24 V DC, 0.7Amp.
(Reference No. 9000 - 02)



Tempens Instruments (I) Pvt. Ltd.

B-188 A Road No.-5, M.I.A., Madri, Udaipur - 313 003 (Raj) INDIA

Ph.: +91-294-3507700, Fax.: +91-294-3507731,

E-mail: info@tempens.com

www.tempens.com